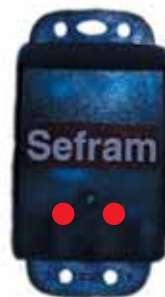


Compact technology for accurate checking and monitoring



- Dataloggers record : Temperature, Humidity, Current, Voltage and physical parameters
- Memory size is maximum 60 000 records
- Sampling rate from 500 ms up to 1h
- Vertical resolution : 12 Bits
- Infrared interface to download all the data and set up.
- Two Alarms
- Watertight IP 68 (SEFRAM 1501P1)



Thermoplastic case for Agriculture and food industry UL and CE approved.



Technical Specification	1501P1	1510-K	1510-K1	1511-PT1	1520P1	1520-K	1522-K
Measurement type	Ti	Ti + ThK	Ti + ThK	Ti + Pt100	Ti + HR	Ti + HR + ThK	Ti + 2 x ThK
internal temperature (Ti)	- 40 to + 85°C	- 40 to + 85°C	- 40 to + 85°C	- 40 to + 85°C	- 40 to + 85°C	-40 to + 85°C	-40 to + 85°C
Accuracy (Resolution) of Ti	± 1°C(±0,1°C)	± 1°C(±0,1°C)	± 1°C(±0,1°C)	± 1°C(±0,1°C)	± 1°C(±0,1°C)	± 1°C(±0,1°C)	± 1°C(±0,1°C)
External temperature (ThK or Pt100)	-	-50 to +150°C	-100 to +1200°C	-200 to +850°C	-	-50 to +150°C	-50 to +150°C
Accuracy of External T(2)	-	± 0,5°C (0,1°C)	± 2°C (0,5°C)	± 1,5°C (0,5°C)	-	± 0,5°C (0,1°C)	± 0,5°C (0,1°C)
Humidity	-	-	-	-	5% to 95%RH	5% to 95%RH	-
Accuracy in RH	-	-	-	-	± 3%	± 3%	-
DC voltage	-	-	-	-	-	-	-
Accuracy in DC voltage	-	-	-	-	-	-	-
DC current	-	-	-	-	-	-	-
Accuracy in DC current	-	-	-	-	-	-	-
Memory capacity (measurements)	60 000	21600	21600	21600	60 000	21600	43300
Measurement period	500 ms to 1h	500 ms to 1h	500 ms to 1h	500 ms to 1h	2s/ to 1h	2s to 1h	500 ms to 1h
Converter resolution	12 bits	12 bits	12 bits	12 bits	12 bits	12 bits	12 bits
Alarms	2	2	2	2	2	2	2
Alarm output	-	1	1	1	1	1	1
Sealing category	IP 68	IP 32	IP 32	P 43	IP 43	IP 32	IP 32
Tamper-proof	-	-	-	-	-	-	-

General Specification

Safety standard	IEC 1010 CAT I 30 V
Autonomy	2 years
Temp. of storage	- 40 to + 85 °C
Dimensions	42 x 57 x 25 mm
Weight	52g

- (1) Option with accessory 915003120
 (2) For thermocouples add ± 1°C on accuracy

OPTIONAL ACCESSORIES :

With SEFRAM LOG 1511PT and 1511PT1 :
 Connector with 3 wires screw bounding for PT100 cabling (SA213)
 With SEFRAM LOG 1550-K1 and 1555 :
 5-way screw connector (SA215)

OPTIONAL ACCESSORIES :

- SC 600 - Transport case
- SI 683 - Application software on CD-rom
- SI 687 - Start/Stop remote control (for all models)
- SI 692 - Kit with USB interface and infrared transmitter-receiver
- SI 693 - Kit with: software + infrared transmitter-receiver + USB cable
- SP 205 (2) - Current transducer (1 VDC/10 AAC-25 A, Ø 15 mm)
- SP 215 (2) - Current transducer (1 VDC/100 AAC-250 A, Ø 50 mm)
- ST 400 - Bead probe "K" type, general use, -40 to 204°C
- ST 401 - Bead probe "K" type, general use, -40 to 204°C, 2m
- ST 402 - Food probe "K", 350°C
- ST 405 - PT100 probe, -70°C to 250°C, 2m
- ST 406 - Bead probe "K" type, general use, -40 to 204°C 1m for 1550-K1 only



(2) see page 54, 55, 56, 57

SI 683 : Windows based software for easy data collection and analysis

Datalogger configuration : date , time , type of measurements, sample periods, alarms...

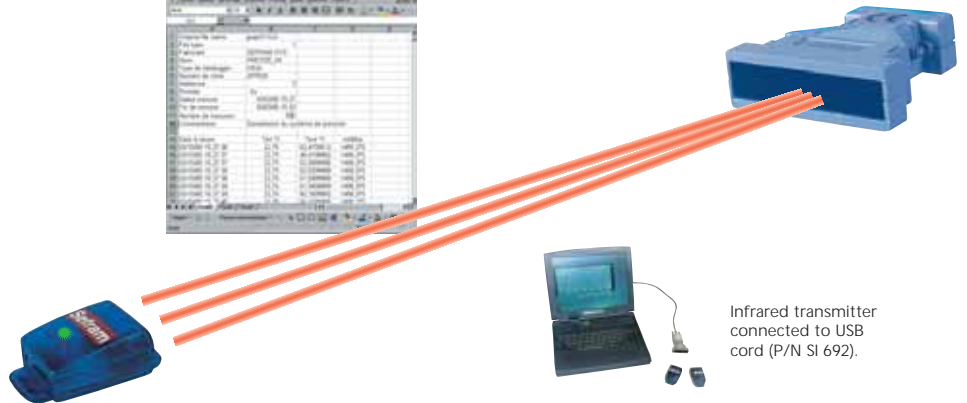
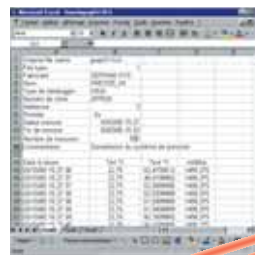
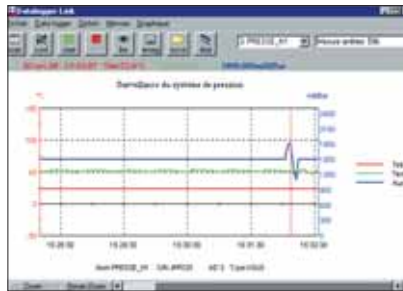
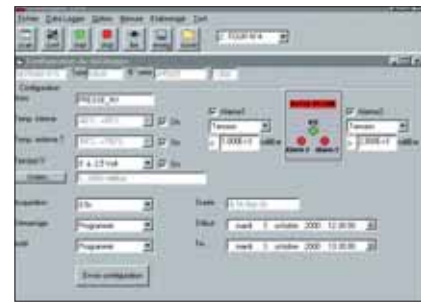
Display of stored reading in graphic form : Total and partial temperature curve with zoom function.

Data export to Microsoft® Excel® file.

Measurements in real time

Data safety : Coded file , user password.

Two Alarms : Alarms configuration by threshold (in voltage, in internal and external temperature).



1525-1	1530-K	1530-K1	1550-K1	1555
T + U	Ti + ThK + U	Ti + ThK + U	Ti + 4 x ThK	Ti+4xU
-40 to + 85°C	-40 to + 85°C	-40 to + 85°C	- 40 to + 85°C	- 40 to + 85°C
±1°C(±0,1°C)	±1°C(±0,1°C)	± 1°C(±0,1°C)	± 1°C(±0,1°C)	± 1°C(±0,1°C)
-	-50 to +150°C	- 100 to +1200°C	- 100 to +1200°C	-
-	± 0,5°C (0,1°C)	± 2°C (0,5°C)	± 1,5°C (0,3°C)	-
-	-	-	-	-
-	-	-	-	-
2,5V/10V/25V	2,5V/10V/25V	2,5V/10V/25V	-	2,5V/10V/25V
± 0,1 %	± 0,1 %	± 0,1%	-	± 0,1%
0-25 mA ⁽¹⁾	0-25 mA ⁽¹⁾	0-25 mA ⁽¹⁾	-	0-25 mA(1)
0,25 %	0,25 %	0,25%	-	0,25%
60000	21600	21600	43300	60000
500 ms to 1h	500 ms to 1h	500ms to 1h	500ms to 1h	500ms to 1h
12 bits	12 bits	12 bits	12 bits	12 bits
2	2	2	2	2
1	1	1	-	-
IP 32	IP 32	IP 32	IP 32	IP 32
-	-	-	-	-



SEFRAM LOG 1501 PDA

SEFRAM LOG 1501 P1 and SEFRAM LOG 1520 P1 are fully compatible with PDA computer PALM®. PDA compatible : M130, Zire 31,72, Tungstène E2,T3, T5. For other models please contact us.

OPTIONAL ACCESSORIES :

- 915003120 - 0-25mA, input adapter with screw connector on DIN/OMEGA rail for 1525, 1530K et K1.
- 915003121 - 0-25mA, input adapter with screw connector on DIN/OMEGA rail for 1555 only.
- 915003130 - input adapter with screw connector on DIN/OMEGA rail for SEFRAM LOG 1525 et 1530-K)
- 915003150 - Adaptor femal K thermocouple socket / jack 2,5mm
- 915003151 - Banana jack adaptater
- 915003153 - Input adapter with screw connector for 1550-K1 et 1555.
- 915005100 - Plastic bag with 10 male jacks



REPLACEMENT PARTS :

- 915005200 - Lithium Battery
- 915005300 - Seal for (SEFRAM LOG 1501)
- 915005400 - Mounting kit 5 magnets + 5 velcros

NEW

With the new Seframlog 1501P1, 1520P1, 1525-1 , You can define a selectable trigger for your records