



Basic Series • Special Panel Meters

For Alternating Voltage 45 ... 50 ... 60 ... 65 Hz



EQB 96/U6

Description

Voltmeter with selector switch

6 Positions without zero position

L1-L3, L2-L3, L1-L2

L1-N, L2-N, L3-N

Analog panel meter with moving-iron movement and spring-loaded pivot bearing

Display

Scale Division Coarse-fine

Pointer Knife-edge pointer per DIN

Mechanical Design

Housing Material Polycarbonate, self-extinguishing and drip-proof per UL94V-0

Mounting Fasteners Screw clamp

Replaceable Front frames and glass windows
⇒ May only be replaced under voltage-free conditions!

Terminals M4 screw terminals with self-lifting terminal clips. Screws can be turned with a cross-head or standard screw drivers

Contact Protection Finger-safe terminal cover included

Schematic Diagram



Moving-iron movement, 90° scale white, imprint black
Narrow front frame per DIN 43 718, anti-glare glass

| | | |
|--------------------------------|-----------|-----------|
| Dimensions mm | 72 x 72 | 96 x 96 |
| Type | EQB 72/U6 | EQB 96/U6 |
| Scale Length mm | 63 | 97 |
| Accuracy Class | 1.5 | 1.5 |
| Max. Weight | 0.22 kg | 0.27 kg |
| Max. Operating Voltage | 300 V | 300 V |
| Test Voltage | 3.5 kV | 3.5 kV |
| Front Housing-Panel Protection | IP 52 | IP 52 |

Power Consumption

| Connection | Measuring Input | Power Consumption |
|------------|-------------------------------------|-------------------|
| direct | Voltage Phase-Phase 120 V ... 500 V | approx. 2.5 VA |

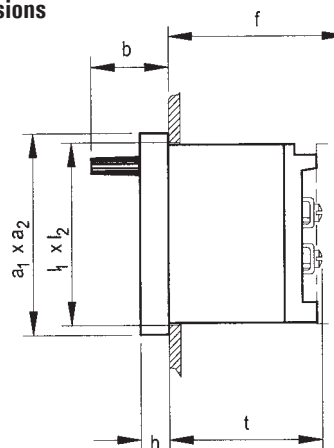
Reference Conditions

| Reference Quantities | Reference Conditions |
|----------------------|-----------------------------|
| Ambient Temperature | 23°C ± 2°C |
| Position of Use | control panel vertical ± 1° |
| Frequency | 45 ... 65 Hz |
| Other | DIN EN 60051 |

Nominal Range of Use Limits

| | |
|-----------|--------------------------------------|
| Frequency | for alternating current 45 ... 65 Hz |
|-----------|--------------------------------------|

Basic Dimensions

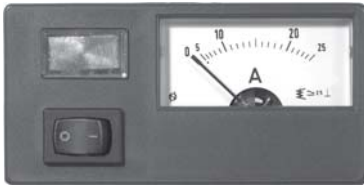


| Front in mm | Nominal Dimensions | | Cutout Dimensions, mm l ₁ x l ₂ | Installation Depth Including Terminals (t), mm M4 | Installation Depth Including Full Covers (f), mm | Selector Switch (b) |
|-------------|---------------------------------|-----|--|--|---|------------------------|
| | a ₁ x a ₂ | h | | | | |
| 72 x 72 | 72 x 72 | 5.5 | 68 ^{+0.7} x 68 ^{+0.7} | 53 | 66 | 20 |
| 96 x 96 | 96 x 96 | 5.5 | 92 ^{+0.8} x 92 ^{+0.8} | 53 | 66 | 20 |

| Range | Scale | Type | EQB 72/U6 | EQB 96/U6 |
|-------|----------------------|-----------|-------------|-------------|
| | | Order No. | ↓ | ↓ |
| 120 V | 6 kV / 10 kV / 120 V | | 72120 67212 | 96120 69612 |
| 500 V | 300 V / 500 V | | 72500 67250 | 96500 69650 |

Basic Series • Special Panel Meters

For Direct or Alternating Current or Voltage 15 ... 45 ... 65 ... 100 Hz



FkN 2

Moving-iron movement, 105° vertical or horizontal scale white, imprint black with grey flange, similar to RAL 7024, Switch 2 A / 250 V and lamp 230 V white

| | | |
|--------------------------------|--------------------------|----------------------------|
| Front Dimensions mm | 96 x 48 | 48 x 96 |
| Type | FkN 2 vertical scale* | FkN 2 horizontal scale* |
| Scale Length mm | 32 | 32 |
| Accuracy Class | 2.5 | 2.5 |
| Max. Weight(standard model) | 0.15 kg | 0.15 kg |
| Max. Operating Voltage | 300 V | 300 V |
| Test Voltage | 5.8 kV | 5.8 kV |
| Front Housing-Panel Protection | IP 52 | IP 52 |

* Specify in clear text

Description

Analog panel meter with moving-iron movement

Display

Scale Division WN-division

Pointer Tube pointer

Mechanical Design

Housing Material Thermoplast, white (ABS)

Mounting Fasteners Clamp bolt with milled nut

Scale permanently mounted

Window Plexiglas 7 N, antistatic coating (PMMA)

Terminals Terminal board 2.5 mm² and M4 - M6 screw terminals

Contact Protection Finger-safe terminal cover included

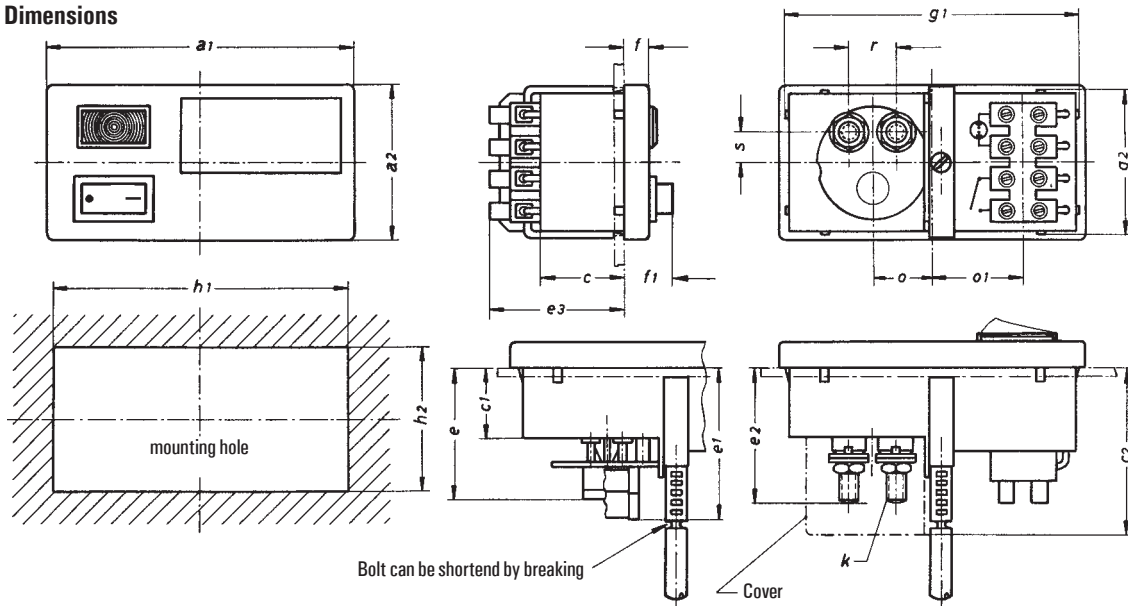
Power Consumption

| Measuring Input | Power Consumption |
|-------------------------------|-------------------|
| Direct or Alternating Voltage | approx. 3-5 VA |

Reference Conditions

| Reference Quantities | Reference Conditions |
|---|---|
| Ambient Temperature Position of Use Other | 23°C ± 2°C control panel vertical ± 1° DIN EN 60051 |

Basic Dimensions



| Type | a1 | a2 | c | c1 | c2 | e | | e2 | | e3 | f | f1 | g1 | g2 | h1 | h2 | k | | | o | o1 | r | | s | |
|--------------|----|----|------|------|------|----------|------------|-----------|-----------|------|------|----|----|------|----|--------|-----------|-----------|-----------|-----|------|-----------|-----------|----|-----------|
| | | | | | | 4 - 300V | 400 - 600V | upto 14 A | 15 - 25 A | | | | | | | | 26 - 40 A | upto 14 A | 15 - 25 A | | | 26 - 40 A | upto 25 A | | 26 - 40 A |
| FkN 2 | 96 | 48 | 26.3 | 21.7 | 51.7 | 41 | 46 | 31 | 36.5 | 42.5 | 42.5 | 8 | 15 | 91.5 | 45 | 92±0,3 | 45±0,3 | M 4 | M 5 | M 6 | 18.7 | 28.5 | 13 | 15 | 9.5 |



Basic Series • Special Panel Meters

For Direct or Alternating Current or Voltage 15 ... 45 ... 65 ... 100 Hz

Moving-iron movement, 105° vertical or horizontal scale white,
imprint black with grey flange, similar to RAL 7024,
Switch 2 A / 250 V and lamp 230 V white

| | Scale ¹⁾ | Type Order No. | FkN 2 Horizontal Scale ¹⁾ ↓ | FkN 2 Vertical Scale ¹⁾ ↓ |
|---|------------------------------------|-------------------|---|---|
| Direct or Alternating Current | | | | |
| Range: | | | | |
| 0 – 100 ... 600 mA ¹⁾ | in accordance with measuring range | | N59999 | N59999 |
| 1 ... 10 A ¹⁾ | in accordance with measuring range | | N59999 | N59999 |
| 15 A | 15 A | | N51301 | N51300 |
| 25 A | 25 A | | N51303 | N51302 |
| 40 A | 40 A | | N51305 | N51304 |
| Alternating Current | | | | |
| Connection to Current Transformer sec. .../1 A | ... ¹⁾ | | N51287 | N51286 |
| Connection to Current Transformer sec. .../5 A | ... ¹⁾ | | N51295 | N51294 |
| Direct or Alternating Voltage | | | | |
| Range: | | | | |
| 4 ... 150 V ¹⁾ | in accordance with measuring range | | N52555 | N52555 |
| 250 V | 250 V | | N51329 | N51328 |
| Alternating Voltage | | | | |
| Connection to Voltage Transformer sec. .../100 V | ... ¹⁾ | | N51325 | N51324 |
| Connection to Voltage Transformer sec. .../110 V | ... ¹⁾ | | N52555 | N52555 |

1) Specify in clear text

| Accessories / Spare parts | Order No. |
|---------------------------|-------------|
| Snap-lock cover for FkN 2 | N24656 |
| Lamp for FkN 2 | N07346 |
| 220 V AC | N10816 |
| 110 V AC | |
| Switch for FkN 2 | 48343 86110 |