

When to use it ?

In terrestrial :

- In its standard use, the Autoset mode enables filling the currently selected place by programs found during the scan. It is used for detecting the different multiplex, channels and their characteristics (frequency, standard,...). Then it is possible to use these channels to operate the measurements.

In satellite :

- In satellite, the Autoset mode has to be used within a specific framework (a Autoset is not always necessary). The search settings have to be precise.

- A complete Autoset on the Ku band can last. Many frequencies will be detected : all of them won't be represented in the place and in its 50-program board. Furthermore, it is not necessary to have so many frequencies to configure a system. By default, satellite places have already been saved with transponders pre-recorded in the TV meter.

- The channels pre-recorded in Autoset also depend on the used LNB and on its characteristics. The frequencies scanned with a LNB can be a little different from the theoretical frequencies. So, it is better using another method to setup the satellite places ("*.ini" files, TR7836).

How to use it ?



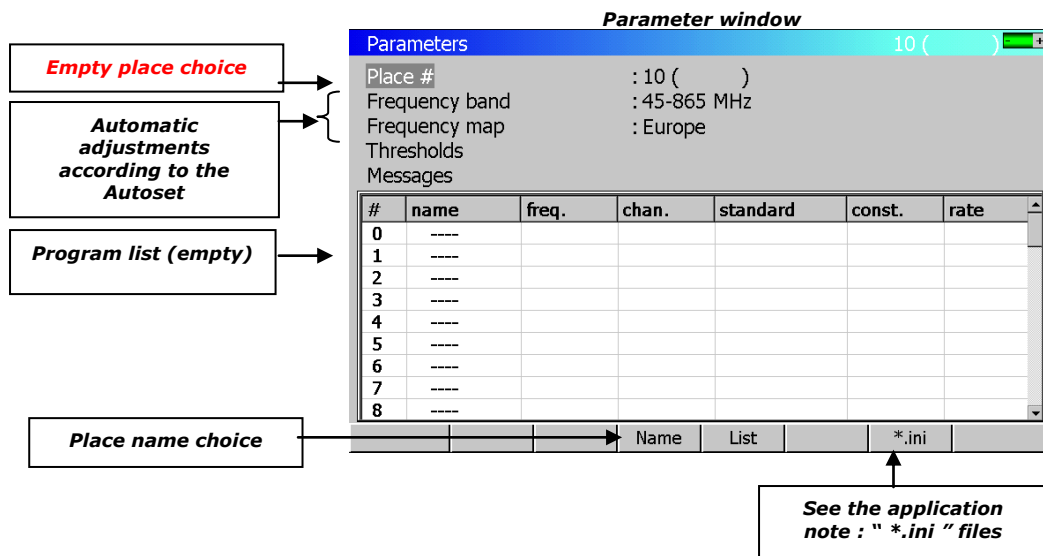
The Autoset function replaces all the informations and programs of the current place (program list). Before launching the search, choose an empty place.

Above all, make sure that the antenna (terrestrial or satellite) is correctly pointed at the transmitter (cf. application notes : using the TV meter for a terrestrial/satellite installation).



- Press the Parameter key : and select an empty place with the direction keys or the sensitive wheel.
- Enter the place name with the "Name" button (at the screen bottom).

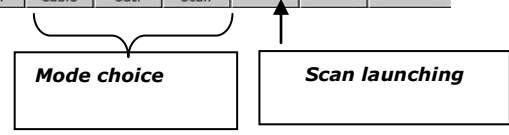
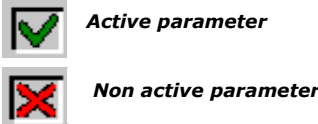
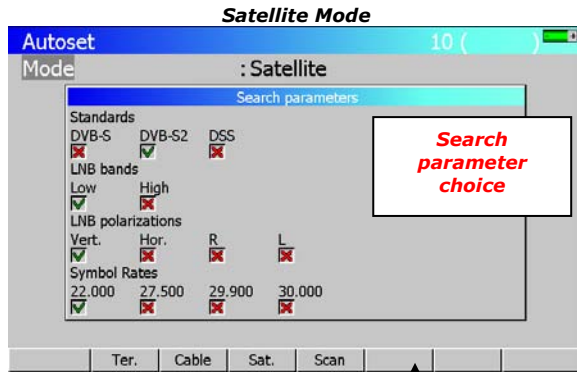
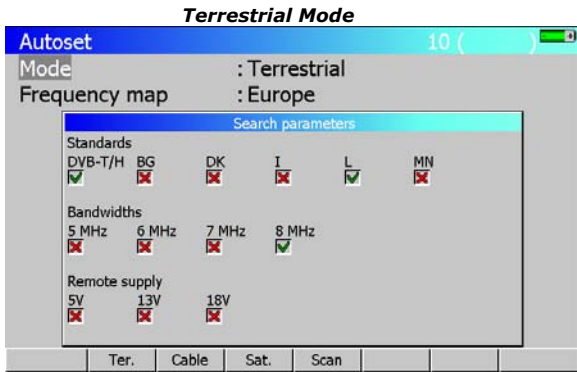
Sometimes, loading "*.ini" files can be better than operating an Autoset (cf. application notes " *.ini " files and/or " *.ini " satellite file use with the TR7836 software).



Now, the field strength meter is ready to be used in Autoset mode, the other configured places won't be deleted.

To access the Autoset mode, press the key :

Many modes are available : Terrestrial, satellite or Cable. Use the menu keys at the screen bottom to select the mode. Then, you have to define the different search parameters and launch the "Scan".



Search parameter choice

Caution : The more options are selected, the longer the search time will be. To avoid wasting too much time during an Autosearch, there are some practical and useful tricks.

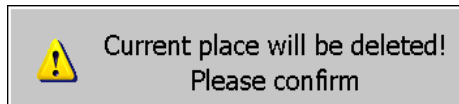
Search parameter optimisation in terrestrial mode:

According to your country, choose the standards and the bandwidths that are used. Validate only these fields in the "Standards" and "Bandwidths" search parameters. If the remote supply is necessary to feed a head amplifier, activate the voltage that corresponds to the system.

Search parameter optimisation in satellite mode :

According to your country, choose the standards and the bandwidths that are used. The commonest symbol rates are 22.000 and 27.500. It is possible to find other informations according to the satellites that are pointed. For example, the Canal Sat programs (Astra 19,2°E) are emitted in a vertical polarity.

Now, the setup is optimised so that the search will be as fast and efficient as possible. Launch the scan : a message appears : check that the current place is empty and validate.



The scan is launched and the test of different channels/frequencies begins. The TV meter indicates as one goes along the number of found programs. Once the scan finished, the different detected programs are saved in the current place. The "measurement map" window appears automatically, that enables checking the levels/error rates of the programs the Autosearch has found.

Measurement map window

#	freq.	ch	std	VIDEO	C/N	BERi	BERo	PER	MER
0	490.000	E23	DVB-T	50.2	>38.3	2.1E-4	<5E-8	<3E-5	27.9
1	514.000	E26	DVB-T	50.2	>37.6	6.3E-5	<5E-8	<3E-5	28.6
2	538.000	E29	DVB-T	52.0	>40.1	4.3E-5	<5E-8	<3E-5	29.2
3	618.000	E39	DVB-T	50.4	>38.1	3.0E-5	<5E-8	<3E-5	30.5
4	706.000	E50	DVB-T	55.1	>43.2	5.6E-5	<5E-8	<3E-5	30.5
5	738.000	E54	DVB-T	55.3	>43.4	5.6E-6	<5E-8	<3E-5	>35.0
6	543.250	E30	L	69.8	>44.4				
7	567.250	E33	L	68.9	>47.9				
8	583.250	E35	L	66.3	>51.3				
9	607.250	E38	L	65.2	>49.5				
10	743.250	E55	L	65.1	>49.7				

Now, the found programs are in the list

Product link : http://www.sefram.com/wwwFR/F_quick_search.asp?st=7861