

1) "*.ini" file use

An "*.ini" file contains the parameters of a place (terrestrial or satellite). Data of this file can be imported directly in the program board of a place with a USB key. "*.ini" files allow saving a considerable amount of time for the field strength meter configuration.

Satellite parameters

European satellite "*.ini" import files (in Ku band) can be downloaded on the Internet site <http://en.kingofsat.net/>, in the folder called "Satellite directory" (<http://en.kingofsat.net/satellites.php>). These files are regularly updated : so it is advised to go on this website to get the latest information.

It is advised to fill this tick box to get a better accuracy of the frequencies

Satellite directory - KingOfSat - Microsoft Internet Explorer fourni par SEFRAM I.S.

Adresse: <http://en.kingofsat.net/satellites.php>

Generate .ini files with frequencies in kHz (allow more complete scans for low SRs, compatibility depending on software used)

Orbital position	Azimuth	Elevation	News	.ini	Total Ku	Total C	Free To Air only	TVI	FM	DATA	Satellite	Incl.	Total	Free To Air only	Last updated
3.0°E					0	0	0	0	0	0	Eutelsat W2M	0.00°	-	-	2009-06-15 23:24
4.0°E					9	0	9	9	0	0	Eurobird 4	0.22°	-	-	2009-06-11 23:53
											Eurobird 4A	0.06°	9	9	2009-06-12 00:03
4.8°E					692	0	184	528	83	81	Sirius 4	0.02°	692	184	2009-06-17 06:24
5.0°E					0	0	0	0	0	0	Thor 2	0.87°	-	-	2009-05-01 15:04
7.0°E					332	0	135	196	78	58	Eutelsat W3A	0.07°	332	135	2009-06-18 06:30
9.0°E					332	0	118	292	28	12	Eurobird 9A	0.01°	332	118	2009-06-17 21:01
10.0°E					29	0	19	26	3	0	Eutelsat W2A	0.00°	29	19	2009-05-23 09:23
13.0°E					1960	0	1165	1318	493	149	Hotbird 6	0.05°	572	410	2009-06-18 09:39
											Hotbird 8	0.07°	871	529	2009-06-18 09:39
											Hotbird 9	0.05°	517	226	2009-06-17 19:17
16.0°E					495	0	216	354	85	56	Eurobird 16A	0.01°	21	1	2009-06-11 22:02
											Eutelsat W2	0.05°	474	215	2009-06-17 22:13
19.2°E					1528	0	961	1031	314	183	Astra 1F	0.03°	47	27	2009-06-11 21:40
											Astra 1H	0.09°	648	496	2009-06-18 09:08
											Astra 1KR	0.10°	283	153	2009-06-16 22:14
											Astra 1L	0.08°	300	200	2009-06-18 09:08
21.5°E					30	0	27	13	2	15	Eutelsat W6	0.06°	30	27	2009-06-17 22:15
23.5°E					469	0	176	289	141	39	Astra 1E	0.07°	51	36	2009-06-18 07:12
											Astra 1G	0.03°	90	24	2009-06-18 07:12
											Astra 3A	0.07°	328	116	2009-06-15 18:24
25.5°E					141	0	73	129	10	2	Eurobird 2	0.07°	141	73	2009-04-30 23:06
26.0°E					448	0	408	338	99	11	Badr 4	0.06°	267	266	2009-06-17 21:08
											Badr 6	0.05°	181	142	2009-06-17 21:08

Click in this column to download the « *.ini » file that corresponds to the wanted satellite



Before using the USB key, check that it doesn't contain an update file. If a "Autorun" folder appears in the root of the USB key, you have to delete it. Otherwise, the connection between the USB key and the field strength meter will automatically launch an update.

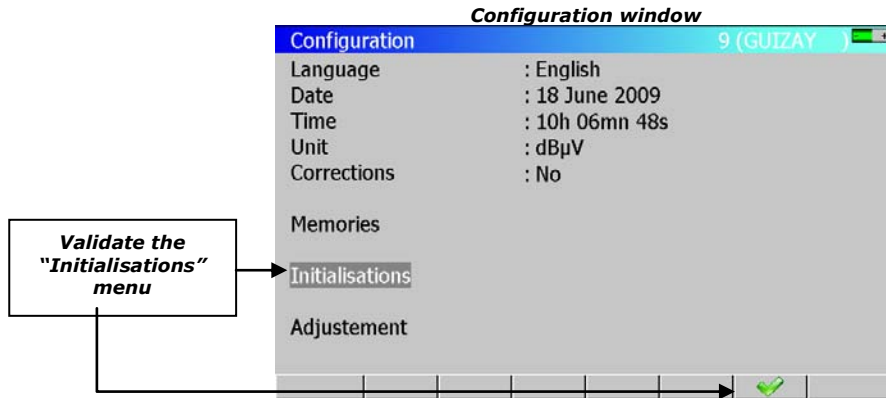
2) Memorisation/recall of the TV meter configuration

It is possible to export/import the complete configuration of the device with a USB key ("*.cng" file). The memorisation allows keeping all the places with the saved programs.

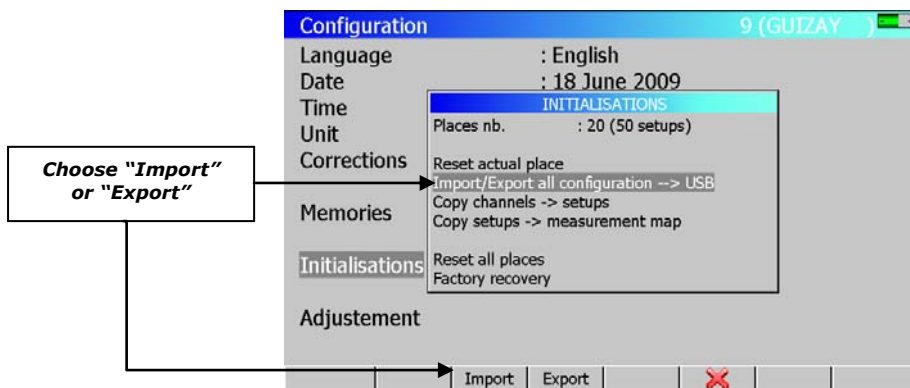
Procedure

Connect a USB key on the field strength meter.

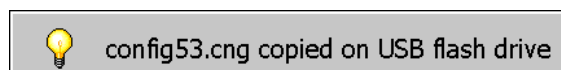
Press the "Configuration" key : , and select the "Initialisations" menu with the direction keys and the sensitive keys.



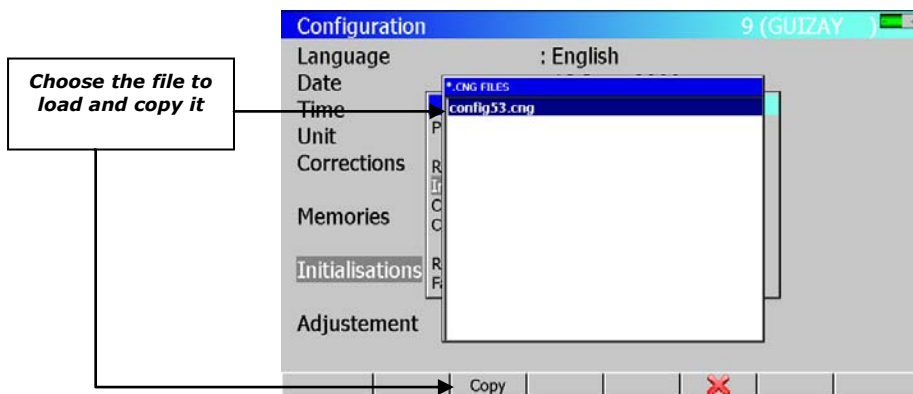
In the submenu, select "Import/Export all configuration --> USB" and press "Import" or "Export" at the screen bottom..



Export : the created file is called "config +TV meter serial number". The file is saved in the USB key root.



Import : in the submenu, choose the configuration file to load in the device, then validate with the "Copy" key.



Product link : http://www.sefram.com/wwwFR/F_quick_search.asp?st=7861