

SEFRAMSAT

The **SeframSat** software allows the user to customize the data of the check satellite mode in the Sefram field strength meters having this function.

Compatible field strength meters:

- 7805 ;
- 7805B
- 7825ST and 7825STM ;
- 783X having a serial number higher than 1000 ;
- 7851 to 7856 ;
- 7861 to 7866.

DOWNLOADING AND INSTALLATION OF THE SEFRAMSAT SOFTWARE

SeframSat requires *Framework2* package. If this component is not present on the computer, it is possible to download it on our website before install it.

On our website www.sefram.com (*Software* section), click on the link **SeframSat_vX_X** to download the software.

When the software is downloaded, click on **SeframSat_vX_X.zip**, and then on **setup.exe** in order to launch the installation. Follow the instructions of the assistant.

Then connect the meter to the computer and turn on the instrument.

Click on *Start / Programs / SeframSat* to run the software.

MENUS DESCRIPTION

FILE

- *Open*: open a list of satellites ("*europa10.sat*" list is supplied with the software).
- *Save*: save the current list of satellites.

INSTRUMENT

- 7805
- 7805B
- 7825 – 7835
- 7851 – 7856
- 7861 – 7866

TCIP (*available for 786X meters only*)

- Choice of the meter's address: transfer to this window the address indicated on the meter (*Configuration page / Adjustments / IP Address USB or IP Address Ethernet*).

PORT (*not available for 786X meters*)

- *COM1* to *COM8*: choice of the serial port number (only the valid ports can be selected).

BAUD (*available for 7805, 7825 and 783X meters only*)

- *9600 baud*: the transmission speed is fixed to 9600 baud for these meters.

DATA (available for 7805, 7825 and 783X meters only)

- 8 bits no parity : parameters of the RS-232 link

INTERFACE

The interface depends on the field strength meter type:

- For *Sefram 7805*: use a RS-232 straight cable with the appropriate adapter (*ref. SA230*).
- For *Sefram 7825* and *783X*: use a RS-232 straight cable (*ref. 978309000*).
- For *Sefram 7805B* and *785X*: use an USB cable (*ref. 978551100*); USB drivers have to be installed.
- For *Sefram 786X*: use an USB cable (*ref. 978551100*) or an Ethernet cross cable (*ref. 298504246*); drivers have to be installed.

CREATION OF A LIST OF SATELLITES

The screenshot shows the SeframSat version 5.0 software interface. The window title is "SeframSat version 5.0" and the menu bar includes "Fichier / File", "Instrument", "TCIP", "Port", "Baud", and "Données / Data". The main area displays the configuration for "ASTRA 1".

Callouts point to the following fields:

- Enter the satellite name. Example: ASTRA 1**: Points to the "Satellite" text box containing "ASTRA 1".
- Enter the satellite position. Example: 19,2°East**: Points to the "Position" text box containing "19,2" and the "Band" dropdown menu containing "East".
- Choice of the band: Ku or C**: Points to the "Band" dropdown menu containing "Ku Band".

The main configuration area contains the following fields:

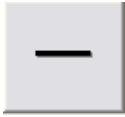
Satellite	Position	Band	Frequency (MHz)	Standard	Symbol rate (kS/s)	Polarity	Icon
ASTRA 1	19,2	East	11720	DVB-S	27500	H	😊
			12515	DVB-S	22000	H	😊
			10979	DVB-S	22000	V	😊
			12363	DVB-S	27500	V	😊

Arrows from the bottom callout point to the "Frequency (MHz)", "Standard", "Symbol rate (kS/s)", and "Polarity" columns of the table.

Enter the different parameters of the 4 transponders: frequency in MHz, standard (DVB-S, DVB-S2, DSS), symbol rate en kS/s and polarity (H or V)



Click on this button to **add a satellite to the list** (maximum 30 satellites).



Click on this button to **remove the current satellite** from the list.



Click on this button to **send the list of satellites** to the meter.



Click on this button to get **list of satellites** from the meter.

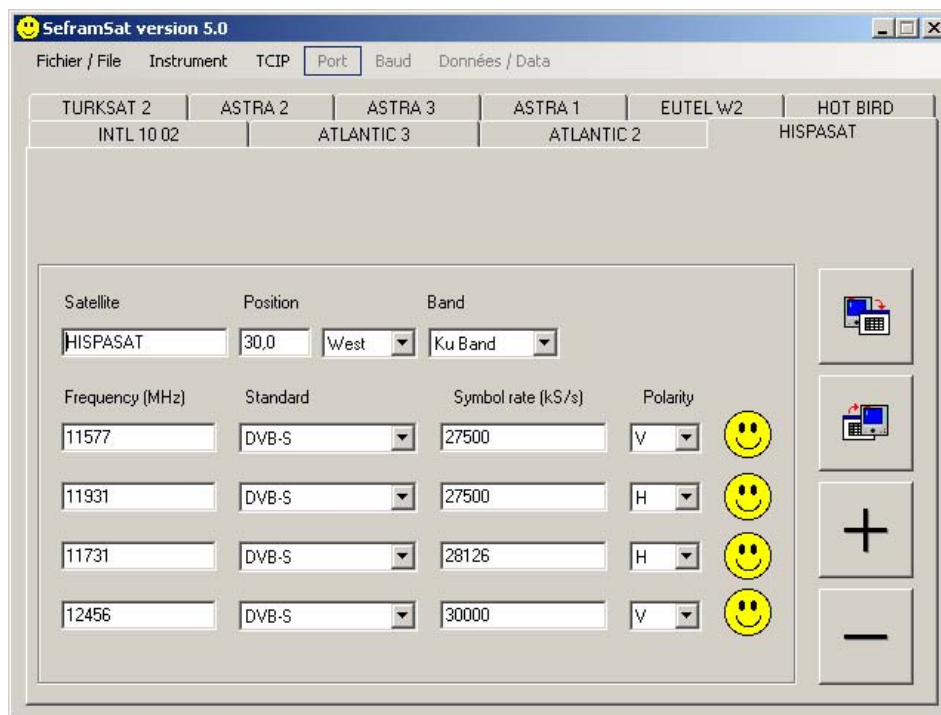
SAVE A LIST OF SATELLITES

It is possible to save the current list of satellites. Click on **FILE**, then on **SAVE**.


RECALL A LIST OF SATELLITES

It is possible to recall lists of satellites in order to change them and send them to the field strength meter. Click on **FILE**, then on **OPEN**.


DOWNLOADING A LIST OF SATELLITES INTO A FIELD STRENGTH METER



Example: "europe10.sat" (list provided with Seframsat)

- First connect the meter to the computer, turn on the meter and open **SeframSat**.
- Then click on **INSTRUMENT** and select the kind of the field strength meter.
- Select the **TCIP address** or the **number of the COM port** used.
- *For 7825 and 783X meters only:* check the **RS-232 parameters** in the **CONFIGURATION** menu: *9600, 8, N, CR*.
- Open or create a list of satellites.
- Finally click on the  icon to realize the transfer.

GET THE LIST OF SATELLITES FROM THE FIELD STRENGTH METER

- First connect the meter to the computer, turn on the meter and open **SeframSat**.
- Then click on **INSTRUMENT** and select the kind of the field strength meter.
- Select the **TCIP address** or the **number of the COM port** used.
- *For 7825 and 783X meters only:* check the **RS-232 parameters** in the **CONFIGURATION** menu: *9600, 8, N, CR*
- Finally click on the  icon to realize the transfer.

If you have any questions or if you need more information, do not hesitate to contact us:

SEFRAM
32 rue Edouard Martel
BP 55
42009 SAINT-ETIENNE CEDEX 2

www.sefram.fr

Customer service and technical support:

Tel: +33 (0) 8 25 56 50 50 (0,15€/min)
Fax: +33 (0) 4 77 59 36 98
E-mail: **support@sefram.fr**

Sales department:

Tel: +33 (0) 8 25 56 50 50 (0,15€/min)
Fax: +33 (0) 4 77 57 23 23
E-mail: **sales@sefram.fr**