

DAS600 / DAS 600SV

Compact, light weight and easy to use, the DAS600 is designed for users requiring a very simple handheld recorder, but without compromising on features. The DAS600 can be your partner for many measurement applications.

Capabilities

- 6 analogue channels
- Universal isolated input
- DC, AC+DC RMS voltage measurement
- Frequency, thermocouple
- Energy / Power analysis function
- 16 logical channels
- 14-bit resolution
- 1Mega sample/s sampling rate
- 100kHz bandwidth
- 20 automatic measurements
- 12" TFT LCD screen
- 32 Mword memory
- 80 Gb internal hard disk
- Interfaces: USB, Ethernet, XGA
- IEC 1010 – Cat III 600V

DAS 600SV : same specifications as DAS600.

This model has no fan and can be used in special polluted environment.

Power/Energy Analysis



DAS 600 : Design and ergonomy

SPECIFICATIONS - UNIVERSAL INPUT BOARD

| | |
|--|--|
| Channels : | 6 |
| VOLTAGE | |
| DC voltage ranges: | 1mV to 1000 V |
| Max offset: | ± 5 ranges (except 1000V) |
| Accuracy: | ± 0,1% ± 10 µV ± 0,2% offset |
| TRMS AC+DC : | 200 mV to 500 V |
| Bandwidth (-3dB): | 5Hz to 500Hz |
| Crest factor : | 2,2 |
| FREQUENCY | |
| Sensitivity | 300mV rms min. |
| Duty cycle | 10% |
| Frequency range | 10Hz to 100kHz |
| Basic accuracy | 0,2% of full scale |
| Maximum input voltage | ± 500VDC or 440V AC (sine) |
| TEMPERATURE | |
| Sensor | Using environnement Ranges |
| J | -20°C to 1200°C 20°C to 2000°C |
| K | -250°C to 1370°C 20°C to 2000°C |
| T | -200°C to 400°C 20°C to 500°C |
| S | -50°C to 1760°C 50°C to 2000°C |
| B | -200°C to 1820°C 50°C to 2000°C |
| E | -250°C to 1000°C 20°C to 1000°C |
| N | -250°C to 1300°C 20°C to 1000°C |
| W5 | 0 à 2320°C 50°C to 2000°C |
| Accuracy | Cold junction compensation : ±1,25°C |
| SAMPLING | |
| Resolution | 14 bits |
| Sampling rate | 1M sample/sec per channel |
| Memory length | 32M word in segments of up to 128 Blocks |
| Triggering | Positive edge, negative edge, on logical input, delay, Go No Go. |
| Pre trigger | -100% à +100% |
| BANDWIDTH | |
| Analog input bandwidth (-3dB) | range ≥ 1V: 100kHz range ≤ 50mV-1V : 50kHz |
| Programmable digital filters | 10Hz, 100Hz, 1kHz, 10kHz |
| Input impedance (DC) | >25MΩ for range <1V 1MΩ for upper ranges |
| Input capacitance | 150pF typ. |
| Maximum input voltage | between one channel and the frame ground ± 500V between 2 terminals of one channel ± 500V |
| Isolation between frame ground and channel | >100MΩ at 500VDC |

POWER/ENERGY ANALYSIS

See detailed specifications page 11

GENERAL SPECIFICATIONS

DISPLAY

Display TFT LCD coloured screen 12 inches f(t) and XY functions
Zoom, cursors, dV,dT and zoom between cursors

Calculation functions :
y=ax+b , y=1/x+b, y=av/x+b+c,
y=ax²+b, y=(log x)+b, yae^(x+b)+c
+, -, x, / between channels

Automatic measurements

20 automatic measurements (F, T, Vpp, Tm...)

STORAGE

Setup backup :

16 named in RAM, unlimited on the hard disk

Internal hard disk Interfaces

80 Gb.
4 USB ports, VGA, Ethernet

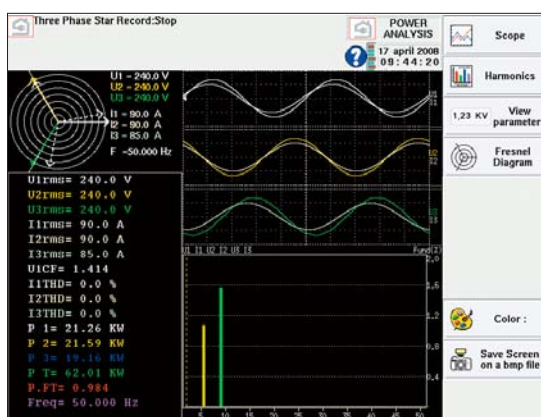
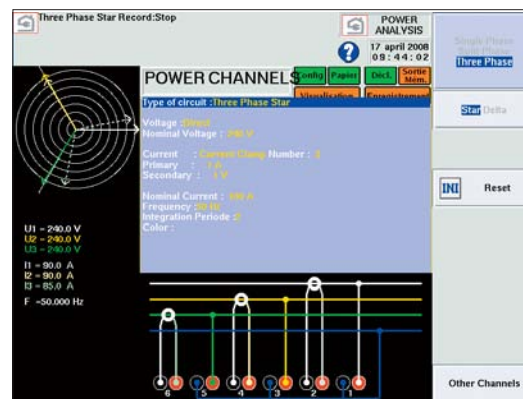
MISCELLANEOUS

Power supply 85VAC to 264 VAC, 47Hz to 63 Hz
Max. consumption : 60W
Dimensions & weight 384 x 445 x 195 , 5 kg
Operating temperature range 0°C to 40°C
Storage temperature range : -20°C to 60°C
Max. RH 80% (without condensation)
Warranty period 1 year
Safety IEC1010 CAT III , 600V

Energy / Power Analysis

for DAS600 / DAS1400 and 8440

- Single phase, dual phases, three phases networks
- Fresnel Diagram
- Oscilloscope mode
- Harmonics up to rank 50
- Memorization of harmonics
- Calculated values : mean value, RMS value, peak value, crest factor, THD, DF, active power, apparent power, reactive power, power factor ($\cos \Phi$).



New applications for your recorder

The new Power /Energy analysis function allows new applications for your SEFRAM recorder. Graphical display will ease the diagnostic and trouble shooting of your electrical networks: you will save time and energy !

This feature can be added by upgrading the embedded software. The new software release is free of charge and can be downloaded from our website. Please contact our technical support if assistance is needed.

Performance and simplicity to suit numerous applications.

These graphical recorders are simple to configure and easy to use. The 8210 & 8211 two channel models feature single function per key, rapid acquisition and display on the graphic screen (8211), recall of the zero position,... For portable applications, either model can be supplied with a carrying case and protective cover. Also available as rack



- 2 synchronised universal input channels
- Colour pen plotting
- Selectable paper speed or external clock control
- Adjustable trace offset
- Selectable noise filters
- RS 232 Interface
- Portable or rack mounting

SEFRAM 8211 features :

- Portable or rack mounting
- XY Mode
- Transient Signal capture
- Parameter printout
- Alarms (2 relays)
- Back lit display

| SEFRAM | 8210 | 8211 |
|---------------------------|---|------------------------|
| Channels | 2 synchronised | |
| Voltage Inputs | 1 mV to 100 V (0.25% FS \pm 10 μ V) | |
| Current Inputs | with shunts* | |
| Temperature | thermocouples(J, K, T, S, B, E, N, W5) and Pt 100 sensors | |
| Resolution | 12 bits | |
| Resolution | - | 2 x 7 kwords |
| Bandwidth | 5 Hz | |
| Input Impedance | > 25 M Ω (range \leq 2V) / 2 Ω (range > 2V) | |
| Transient Sampling Period | - | 50 μ s Δ 1s |
| Filters | 0,02/ 0,07/ 0,25 /0,5 /1Hz | |
| Paper width | 250 mm | |
| Paper Speed | 1cm/h à 5cm/s + horloge externe | |
| Pen Speed | 1,5 m/s maxi | |
| f(t) and XY Modes | - | yes |
| Digital plotting | - | yes |
| Interface | RS 232 | |
| Power supply | 85 à 264 VAC | |
| Dimensions & weight | 450 (L) X 220 (P) X 150 (H) mm ; 5 kg | |
| Warranty | 1 year | |

Supplied with a paper roll, two pens, a power cord and a user's manual
Add value to your recorder by using our accessories.

* optional

For protection during transportation or storage, we recommend the use of the rigid shock-resistant transport case.



Design and manufacturing center in Saint-Etienne / France

Technical support

Our technical support team will provide all necessary information for getting the best performance from our products.

Please contact us : +33 4 77 59 36 97

E-mail : support@sefram.fr

Product updates

Software revisions can be downloaded free from our website. Do not hesitate to visit it frequently to check for available updates. **www.sefram.fr**

Product service

Our service department can provide the best support for your products: periodic maintenance, product upgrades and repair.

Please do not hesitate to contact us for :

- periodic maintenance
- warranty extension
- traceable calibration reports
- spare parts
- repair

ACCESSORIES FOR RECORDER

DIFFERENTIAL PROBES KITS

ELD.1052 700 V Kit, 3 phases

Contains : 3 probes (GE.8100); 3 BNC/Ban. adapters; 3 test leads ; 3 power supplies and a carrying pouch

ELD.1053 1500 V Kit, 3 phases

Contains : 3 probes (GE.8115); 3 adapters BNC/Ban.; 3 test leads; 3 power supplies and a carrying pouch

ELD.1054 700 V Kit, 1 phase

Contains : 1 probe (GE.8100); 1 adapter BNC/Ban.; 1 test lead; 1 power supply and a carrying pouch

ELD.1055 1500 V Kit, 1 phase

Contains : 1 probe (GE.8115); 1 adapter BNC/Ban.; 1 test lead; 1 power supply and a carrying pouch

CURRENT CLAMPS

SP 201 Current clamp (200 AAC, 10 mV/1A, \varnothing 15 mm)

SP 221 Current clamp (100 AAC, 100 mV/1A, \varnothing 15 mm)

SP 230 Current clamp (1200 AAC, 10 mV/1A, \varnothing 50 mm)

SP 261 Current clamp (1200 AAC+DC, 1 mV/1A, \varnothing 50 mm)

SP 270 Current clamp (2000 AAC, 1 mV/1A, \varnothing 70 mm)

CONNECTION KITS

ELD.1060 6 channels connection Kit

Contains : 12 Test leads/stack. ban. plugs with retractable sleeve (2 m), 12 mini-clip leads and a carrying pouch

ELD.1061 Universal 6 channels connection Kit

Contains: 12 Test leads/ Ban./Ban. (2 m), 12 mini-clip leads, 12 flexible Grabbers, 12 Alligator clips and a carrying pouch

ELD.1062 12 channels low voltage connection Kit

Contains : 12 mini-clip leads (one end open) and a carrying pouch

ELD.1063 Coaxial Kit

Contains : 6 cables BNC/ 2 x ban.-(50 Ω -2 m) and a carrying pouch

ELD.1057 Connection Kit for Power and Energy Analysis

Contains : 10 test leads/ stack. ban. plugs (3 m); 1 test lead/ stack. ban. plugs. (25 cm); 5 Alligator clips.; 4 Maxigrabbers; 2 Test tips and a carrying pouch

SHUNTS

910007100 0,01 Ω , 1%, 10 Amax., safety banana plugs

910007200 0,01 Ω , 1%, 3 Amax., safety banana plugs

989007000 50 Ω , 0,5% 50 Amax., safety banana plugs

207030301 0,01 Ω , 0,5%, 30 Amax., screw terminals

207030500 0,01 Ω , 0,5%, 50 Amax., screw terminals

989006000 1 Ω , 0,5%, 0,5 Amax., safety banana plugs



For assistance and ordering



Metrix Electronics Limited

Minchens Court, Minchens Lane,
Bramley, RG26 5BH, U.K.

Tel:+44 (0)845 034 3234, Fax:+44 (0)845 034 3233

E-mail: sales@metrix-electronics.com

Web: www.metrix-electronics.com