



Basic Series • Special Panel Meters

For Alternating Voltage 45 ... 50 ... 60 ... 65 Hz



EQB 96/U6

Description

Voltmeter with selector switch

6 Positions without zero position

L1-L3, L2-L3, L1-L2

L1-N, L2-N, L3-N

Analog panel meter with moving-iron movement and spring-loaded pivot bearing

Display

Scale Division Coarse-fine

Pointer Knife-edge pointer per DIN

Mechanical Design

Housing Material Polycarbonate, self-extinguishing and drip-proof per UL94V-0

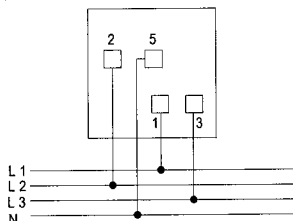
Mounting Fasteners Screw clamp

Replaceable Front frames and glass windows
⇒ May only be replaced under voltage-free conditions!

Terminals M4 screw terminals with self-lifting terminal clips. Screws can be turned with a cross-head or standard screw drivers

Contact Protection Finger-safe terminal cover included

Schematic Diagram



Moving-iron movement, 90° scale white, imprint black
Narrow front frame per DIN 43 718, anti-glare glass

Dimensions mm	72 x 72	96 x 96
Type	EQB 72/U6	EQB 96/U6
Scale Length mm	63	97
Accuracy Class	1.5	1.5
Max. Weight	0.22 kg	0.27 kg
Max. Operating Voltage	300 V	300 V
Test Voltage	3.5 kV	3.5 kV
Front Housing-Panel Protection	IP 52	IP 52

Power Consumption

Connection	Measuring Input	Power Consumption
direct	Voltage Phase-Phase 120 V ... 500 V	approx. 2.5 VA

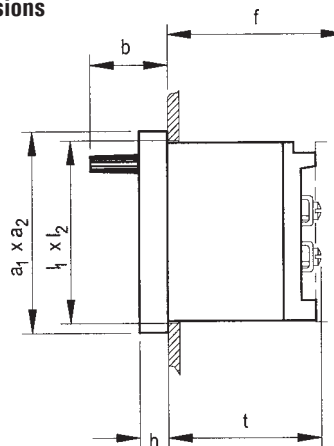
Reference Conditions

Reference Quantities	Reference Conditions
Ambient Temperature	23°C ± 2°C
Position of Use	control panel vertical ± 1°
Frequency	45 ... 65 Hz
Other	DIN EN 60051

Nominal Range of Use Limits

Frequency	for alternating current 45 ... 65 Hz
-----------	--------------------------------------

Basic Dimensions



Front in mm	Nominal Dimensions		Cutout Dimensions, mm l ₁ x l ₂	Installation Depth Including Terminals (t), mm M4	Installation Depth Including Full Covers (f), mm	Selector Switch (b)
	a ₁ x a ₂	h				
72 x 72	72 x 72	5.5	68 ^{+0.7} x 68 ^{+0.7}	53	66	20
96 x 96	96 x 96	5.5	92 ^{+0.8} x 92 ^{+0.8}	53	66	20

Range	Scale	Type	EQB 72/U6	EQB 96/U6
		Order No.	↓	↓
120 V	6 kV / 10 kV / 120 V		72120 67212	96120 69612
500 V	300 V / 500 V		72500 67250	96500 69650



Basic Series • Special Panel Meters

For Direct or Alternating Current or Voltage 15 ... 45 ... 65 ... 100 Hz



FkN 2

Moving-iron movement, 105° vertical or horizontal scale white, imprint black with grey flange, similar to RAL 7024, Switch 2 A / 250 V and lamp 230 V white

Front Dimensions mm	96 x 48	48 x 96
Type	FkN 2 vertical scale*	FkN 2 horizontal scale*
Scale Length mm	32	32
Accuracy Class	2.5	2.5
Max. Weight(standard model)	0.15 kg	0.15 kg
Max. Operating Voltage	300 V	300 V
Test Voltage	5.8 kV	5.8 kV
Front Housing-Panel Protection	IP 52	IP 52

* Specify in clear text

Description

Analog panel meter with moving-iron movement

Display

Scale Division WN-division

Pointer Tube pointer

Mechanical Design

Housing Material Thermoplast, white (ABS)

Mounting Fasteners Clamp bolt with milled nut

Scale permanently mounted

Window Plexiglas 7 N, antistatic coating (PMMA)

Terminals Terminal board 2.5 mm² and M4 - M6 screw terminals

Contact Protection Finger-safe terminal cover included

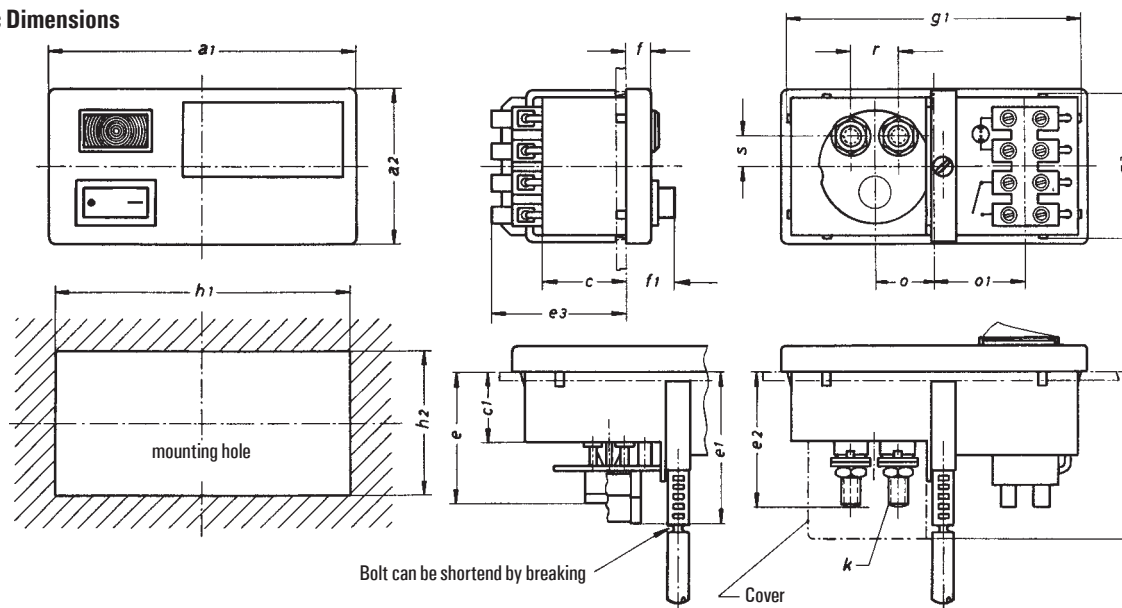
Power Consumption

Measuring Input	Power Consumption
Direct or Alternating Voltage	approx. 3-5 VA

Reference Conditions

Reference Quantities	Reference Conditions
Ambient Temperature	23°C ± 2°C
Position of Use	control panel vertical ± 1°
Other	DIN EN 60051

Basic Dimensions



Type	a1	a2	c	c1	c2	e		e2		e3	f	f1	g1	g2	h1	h2	k			o	o1	r		s
						4 - 300V	400 - 600V	upto 14 A	15 - 25 A								26 - 40 A	upto 14 A	15 - 25 A			26 - 40 A	upto 25 A	
FkN 2	96	48	26.3	21.7	51.7	41	46	31	36.5	42.5	8	15	91.5	45	92±0,3	45+0,3	M 4	M 5	M 6	18.7	28.5	13	15	9.5



Basic Series • Special Panel Meters

For Direct or Alternating Current or Voltage 15 ... 45 ... 65 ... 100 Hz

Moving-iron movement, 105° vertical or horizontal scale white,
imprint black with grey flange, similar to RAL 7024,
Switch 2 A / 250 V and lamp 230 V white

	Scale ¹⁾	Type Order No.	FkN 2 ↓	Horizontal Scale ¹⁾	FkN 2 ↓	Vertical Scale ¹⁾
Direct or Alternating Current						
Range:						
0 – 100 ... 600 mA ¹⁾	in accordance with measuring range		N59999		N59999	
1 ... 10 A ¹⁾	in accordance with measuring range		N59999		N59999	
15 A	15 A		N51301		N51300	
25 A	25 A		N51303		N51302	
40 A	40 A		N51305		N51304	
Alternating Current						
Connection to Current Transformer sec. .../1 A	... ¹⁾		N51287		N51286	
Connection to Current Transformer sec. .../5 A	... ¹⁾		N51295		N51294	
Direct or Alternating Voltage						
Range:						
4 ... 150 V ¹⁾	in accordance with measuring range		N52555		N52555	
250 V	250 V		N51329		N51328	
Alternating Voltage						
Connection to Voltage Transformer sec. .../100 V	... ¹⁾		N51325		N51324	
Connection to Voltage Transformer sec. .../110 V	... ¹⁾		N52555		N52555	

1) Specify in clear text

Accessories / Spare parts	Order No.
Snap-lock cover for FkN 2	N24656
Lamp for FkN 2	220 V AC 110 V AC
	N07346 N10816
Switch for FkN 2	48343 86110