

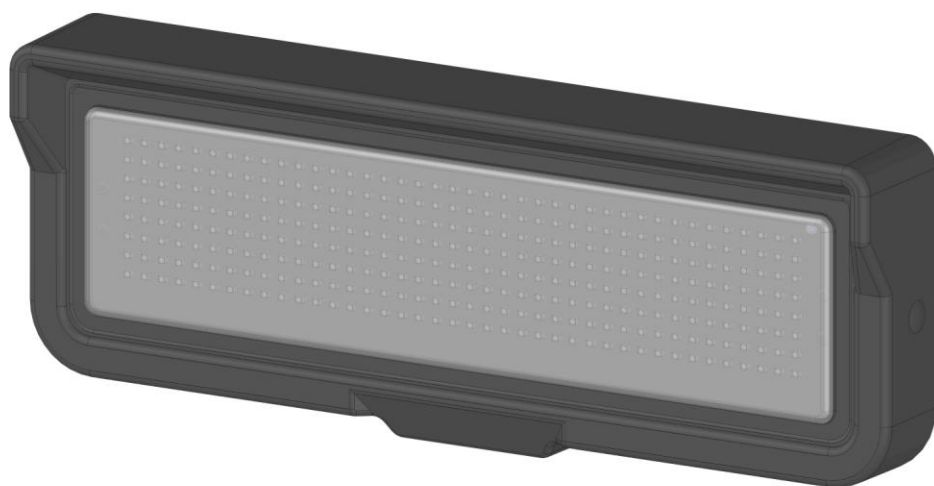


**RGB Technology**<sup>®</sup>  
MODERN TECHNOLOGIES

**metrix**  
electronics

# INSTALLATION GUIDE

**UPWT-1 LED display**



## Specifications

Dimensions: <sup>1</sup> [mm]:	404 x 151 x 40
Digit height [mm]:	60
Permissible input voltage range (long-term):	100 ÷ 240 VAC
Permissible input voltage range (short-term):	85 ÷ 264 VAC
Acceptable input voltage frequency range:	47 ÷ 63 Hz
Device operation temperature (ambient):	-25°C ÷ 45°C
Device operation temperature (device surface):	-25°C ÷ 60°C
Average power consumption:	5W
Casing tightness rating <sup>2</sup> IP:	66
Device weight:	1.5kg

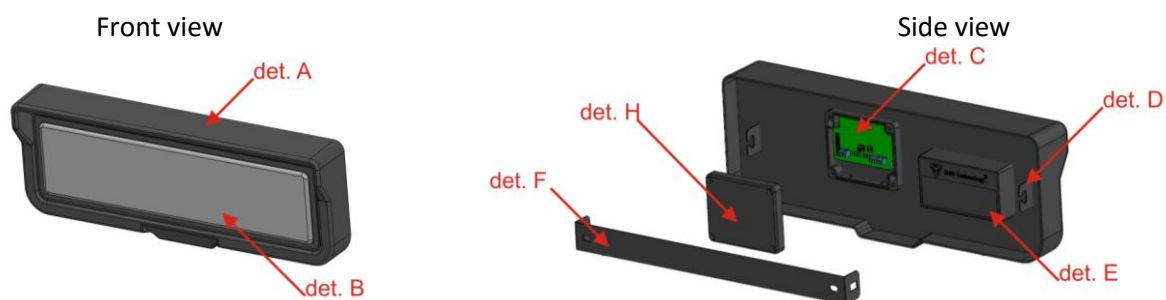
## Transport and storage

Care should be taken to properly protect the devices so as to eliminate any damage during transport. It is forbidden to transport the devices in a collective package without adequate amortisation - each device must be packed separately and cannot have freedom of movement during transportation.

Due to the protective packing the module should be stored in the temperature not lower than -20°C and not higher than +60°C at the humidity below 99%RH.

## Device construction

UPWT-1 has a housing made of polycarbonate, which is resistant to UV radiation and has a high mechanical strength. By using the thermo-moulded housing and a rear sealing layer, the device, when properly assembled, meets the IP66 tightness requirements. The display can also operate at the temperatures from -20°C to + 60°C.



det. A – Prestige line housing; det. B – display; det. C – mini extender plate; det. D – mounting the bracket holder; det. E – power supply unit; det. F – mounting bracket

Fig. 1

## Power cable

Five-metre power cord (2 x 0.5mm<sup>2</sup>, core markings: blue, brown), terminated with WAGO 222-412 connectors on each core,

<sup>1</sup> Integrated roof 55mm.

<sup>2</sup> Specified on the basis of EN 60529.

## Dimensions

All dimensions shown in the drawings are given in [mm].

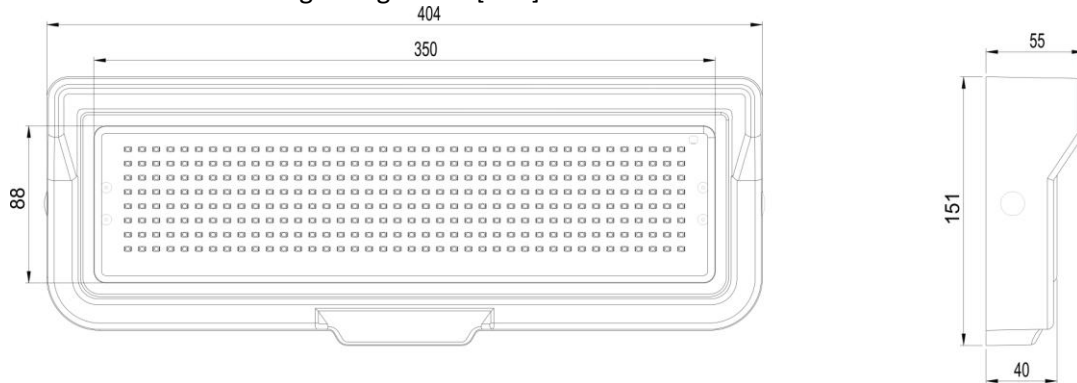


Fig. 2

## Mounting the display

### Mounting bracket

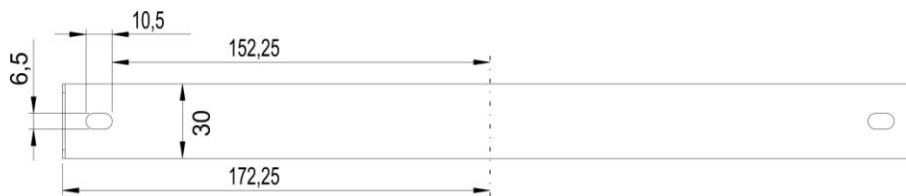


Fig. 3

## Avoiding mistakes during installation

Correct mounting consists in installing the device on a flat surface with wires facing down. Only the proper mounting of the device ensures its proper operation and the maintenance of the device parameters, like, among others, the housing tightness rating to satisfy the IP code.

### NOTICE!

Before any installation or maintenance operations refer to the manual supplied by the manufacturer. Improper connection to the mains power supply, incautious device installation, or improper use may cause the property damage, loss of health or death from electrical shock! In addition, any failure to follow the manufacturer's instructions may void your warranty.

### NOTICE!

Keep in mind that the device should be mounted with the wires facing down.

### NOTICE!

It is forbidden to make any additional mounting points or any holes in the device assembly components and in the device itself.